

Model: A1-6Y

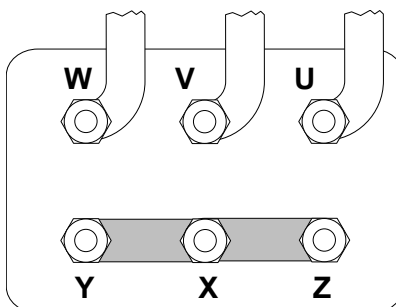
Refrigerant: R404A

Power supply: 400/3/50 DOL-STAR

Technical data:

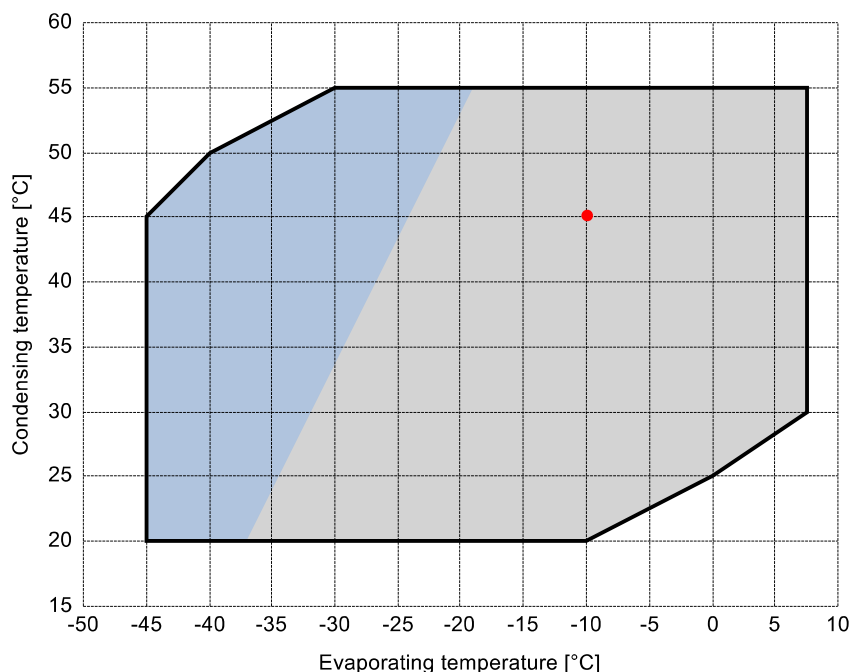
Displacement	5.47 m³/h
Nominal compressor speed	1450 rpm
Motor voltage	400 V
Nominal operating frequency	50 Hz
maximum allowed operating current (MRA)	3.6 A
locked rotor current (LRA)	13.6 A
Number of pistons	2
Net weight	36 kg
Lubricant	FRASCOLD POE32
Oil charge	1 l

Motor connections:



Application range:

Additional cooling required



Reference conditions according to EN12900

- Suction gas temperature = 20 °C
- Liquid subcooling = 0 K
- 100% of the capacity

Certified by:

- Frascold tentative data

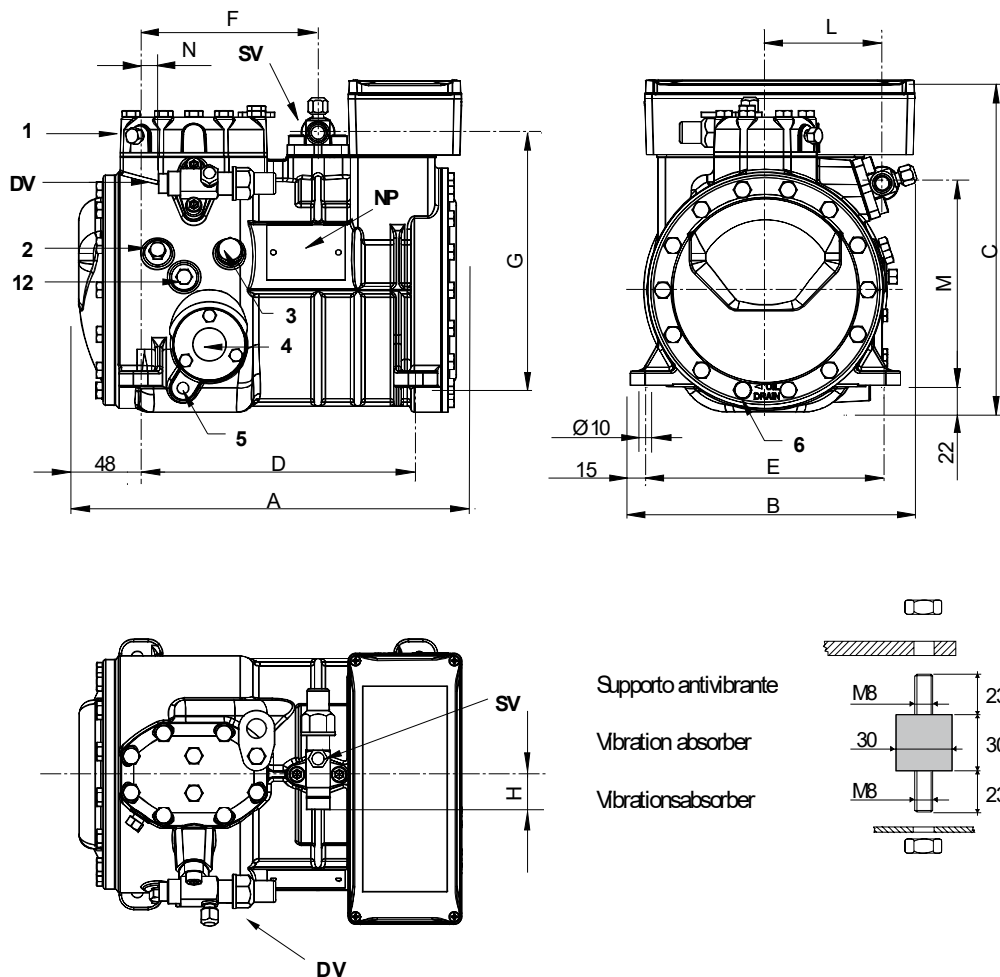
All data subject to change without notice

Model: A1-6Y

Refrigerant: R404A

Power supply: 400/3/50 DOL-STAR

Dimensions:



Legend:

SV: Suction Valve	5/8" in - 16 mm	M: Discharge valve	167 mm
DV: Discharge valve	1/2" in - 12.7 mm	N: Discharge valve	18 mm
A: Length	317 mm	1: High pressure connection	1/8" NPT
B: Width	237 mm	2: Low pressure connection	1/8" NPT
C: Height	275 mm	3: Oil charge plug	1/4" GAS
D: Base mounting	234 mm	4: Oil level sight glass	-
E: Base mounting	194 mm	5: Crankcase heater seat	-
F: Suction Valve	150 mm	6: Oil drain plug	M8 x 22
G: Suction Valve	209 mm	12: Oil return plug	1/8" NPT
H: Suction Valve	29 mm	NP: Nameplate	
L: Discharge valve	97 mm		

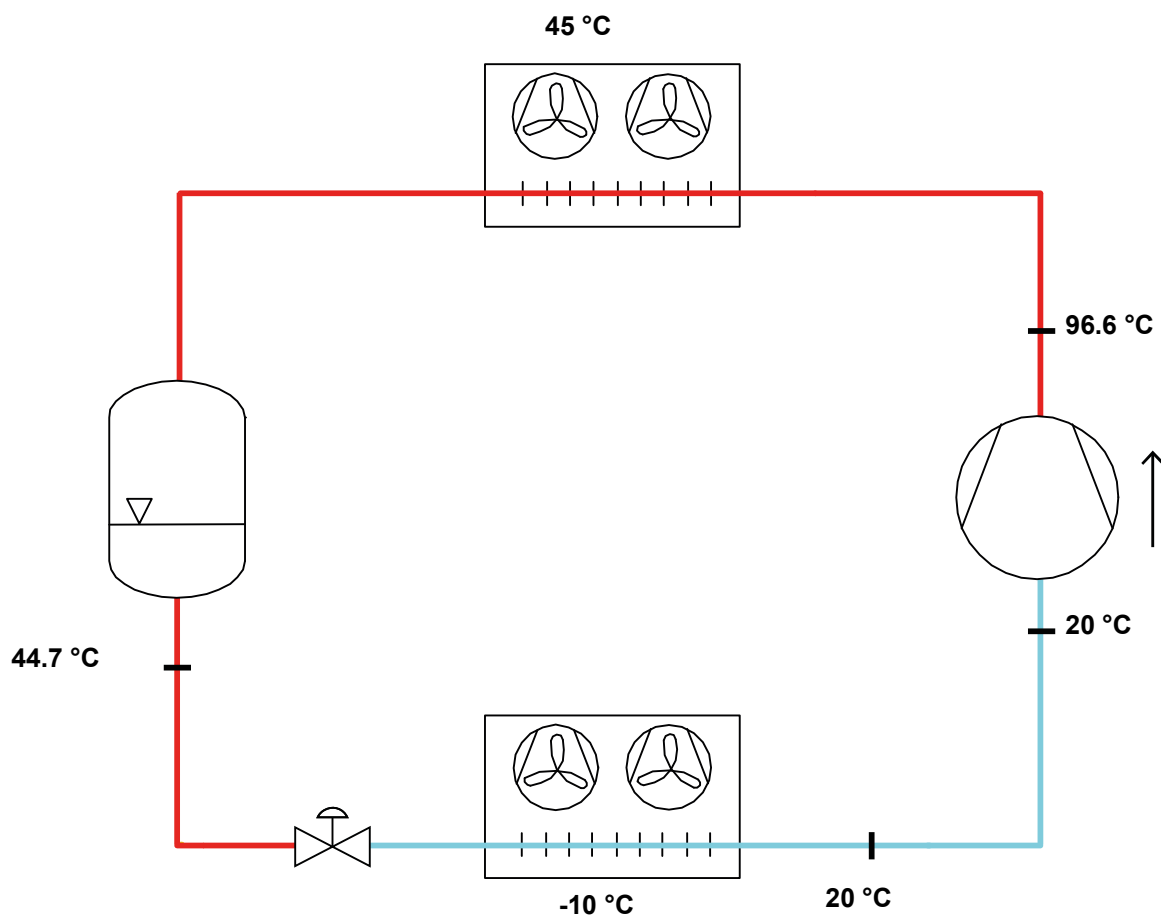
All data subject to change without notice

Model: A1-6Y

Refrigerant: R404A

Power supply: 400/3/50 DOL-STAR

P&I Diagram:



Model: A1-6Y

Refrigerant: R404A

Power supply: 400/3/50 DOL-STAR

Performance data:

Operating mode	Subcritical, 100 % of the capacity
Liquid subcooling	0 K
Suction gas temperature	20 °C
Useful fraction of superheating	100 %
Frequency	50 Hz
Additional cooling required	

Refrigerating capacity [kW]

T.Evap	-40 °C	-35 °C	-30 °C	-25 °C	-20 °C	-15 °C	-10 °C	-5 °C	0 °C	5 °C	7.5 °C
T.Cond											
55 °C	-	-	0.583	0.833	1.134	1.491	1.909	2.395	2.953	3.589	3.938
50 °C	0.283	0.469	0.702	0.988	1.331	1.738	2.213	2.763	3.392	4.106	4.497
45 °C	0.359	0.566	0.827	1.148	1.534	1.99	2.522	3.136	3.836	4.629	5.061
40 °C	0.439	0.668	0.957	1.313	1.742	2.247	2.836	3.514	4.285	5.156	5.63
35 °C	0.523	0.773	1.09	1.482	1.952	2.508	3.153	3.894	4.737	5.685	6.202
30 °C	0.61	0.88	1.226	1.652	2.165	2.77	3.472	4.277	5.19	6.217	6.775
25 °C	0.698	0.989	1.362	1.824	2.379	3.034	3.792	4.661	5.645	-	-
20 °C	0.785	1.097	1.499	1.996	2.593	3.297	4.112	-	-	-	-

Power input [W]

T.Evap	-40 °C	-35 °C	-30 °C	-25 °C	-20 °C	-15 °C	-10 °C	-5 °C	0 °C	5 °C	7.5 °C
T.Cond											
55 °C	-	-	786	920	1061	1203	1342	1472	1589	1687	1727
50 °C	550	652	770	897	1028	1158	1282	1395	1492	1568	1597
45 °C	553	652	764	883	1004	1121	1230	1325	1402	1455	1471
40 °C	562	658	763	873	982	1086	1179	1256	1311	1341	1345
35 °C	570	661	760	860	957	1046	1122	1179	1213	1219	1209
30 °C	571	657	747	837	921	995	1053	1090	1102	1082	1059
25 °C	558	637	719	797	868	926	966	982	970	-	-
20 °C	524	596	668	735	791	832	852	-	-	-	-

COP/EER [W/W]

T.Evap	-40 °C	-35 °C	-30 °C	-25 °C	-20 °C	-15 °C	-10 °C	-5 °C	0 °C	5 °C	7.5 °C
T.Cond											
55 °C	-	-	0.74	0.91	1.07	1.24	1.42	1.63	1.86	2.13	2.28
50 °C	0.51	0.72	0.91	1.1	1.3	1.5	1.73	1.98	2.27	2.62	2.82
45 °C	0.65	0.87	1.08	1.3	1.53	1.78	2.05	2.37	2.74	3.18	3.44
40 °C	0.78	1.02	1.25	1.5	1.77	2.07	2.41	2.8	3.27	3.84	4.19
35 °C	0.92	1.17	1.44	1.72	2.04	2.4	2.81	3.3	3.9	4.66	5.13
30 °C	1.07	1.34	1.64	1.97	2.35	2.78	3.3	3.92	4.71	5.75	6.4
25 °C	1.25	1.55	1.9	2.29	2.74	3.28	3.93	4.75	5.82	-	-
20 °C	1.5	1.84	2.24	2.72	3.28	3.96	4.83	-	-	-	-

Current [A]

T.Evap	-40 °C	-35 °C	-30 °C	-25 °C	-20 °C	-15 °C	-10 °C	-5 °C	0 °C	5 °C	7.5 °C
T.Cond											
55 °C	-	-	2.19	2.3	2.43	2.57	2.71	2.87	3.01	3.13	3.18
50 °C	2.04	2.1	2.18	2.28	2.4	2.52	2.65	2.77	2.89	2.98	3.02
45 °C	2.04	2.1	2.18	2.27	2.37	2.48	2.59	2.7	2.78	2.85	2.86
40 °C	2.04	2.1	2.18	2.26	2.35	2.45	2.54	2.62	2.68	2.71	2.72
35 °C	2.05	2.1	2.17	2.25	2.33	2.41	2.48	2.54	2.58	2.58	2.57
30 °C	2.05	2.1	2.16	2.23	2.3	2.37	2.42	2.45	2.46	2.45	2.42
25 °C	2.04	2.09	2.14	2.2	2.26	2.31	2.34	2.35	2.34	-	-
20 °C	2.03	2.06	2.11	2.16	2.2	2.23	2.24	-	-	-	-

All data subject to change without notice

Model: A1-6Y

Refrigerant: R404A

Power supply: 400/3/50 DOL-STAR

Performance data:

Operating mode	Subcritical, 100 % of the capacity
Liquid subcooling	0 K
Suction gas temperature	20 °C
Useful fraction of superheating	100 %
Frequency	50 Hz
Additional cooling required	

Mass flow [kg/h]

T.Evap	-40 °C	-35 °C	-30 °C	-25 °C	-20 °C	-15 °C	-10 °C	-5 °C	0 °C	5 °C	7.5 °C
T.Cond											
55 °C	-	-	20	29	39	52	68	86	108	134	148
50 °C	9	15	22	31	42	56	72	91	113	139	154
45 °C	10	16	24	34	45	59	76	95	118	145	160
40 °C	12	18	26	36	48	62	79	99	123	150	166
35 °C	13	20	28	38	51	65	83	104	128	155	171
30 °C	15	21	30	40	53	68	86	107	132	160	176
25 °C	16	23	31	42	55	71	90	111	136	-	-
20 °C	17	24	33	44	58	74	93	-	-	-	-