

Model: A1.5-8Y

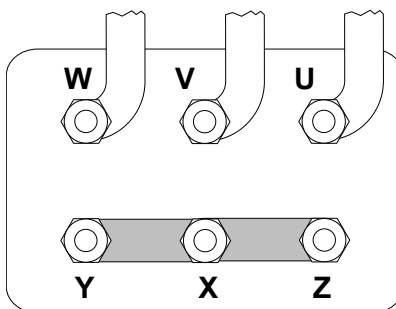
Refrigerant: R404A

Power supply: 400/3/50 DOL-STAR

Technical data:

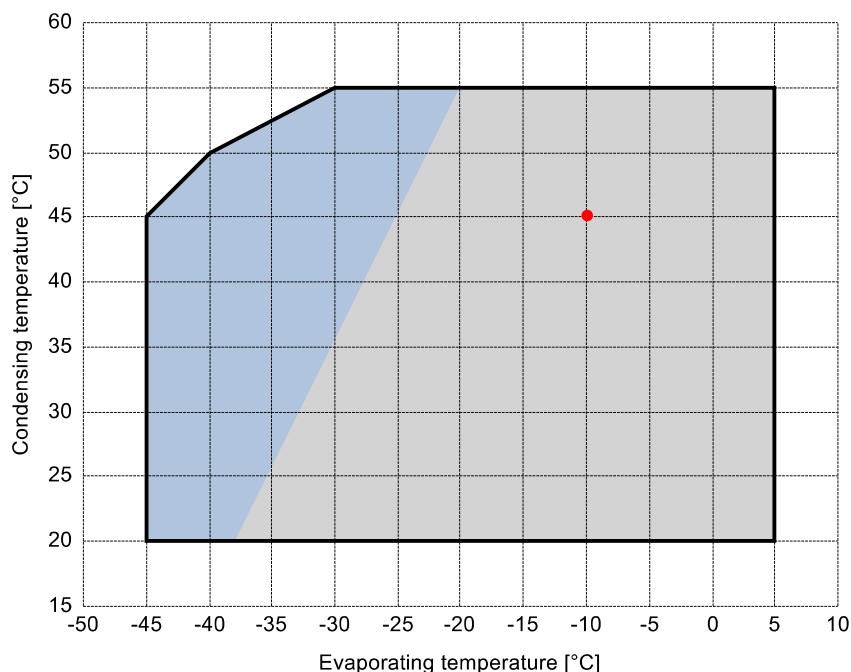
Displacement	7.65 m³/h
Nominal compressor speed	1450 rpm
Motor voltage	400 V
Nominal operating frequency	50 Hz
maximum allowed operating current (MRA)	4.8 A
locked rotor current (LRA)	20.6 A
Number of pistons	2
Net weight	36 kg
Lubricant	FRASCOLD POE32
Oil charge	1 l

Motor connections:



Application range:

Additional cooling required



Reference conditions according to EN12900

- Suction gas temperature = 20 °C
- Liquid subcooling = 0 K
- 100% of the capacity

Certified by:

- Frascold tentative data

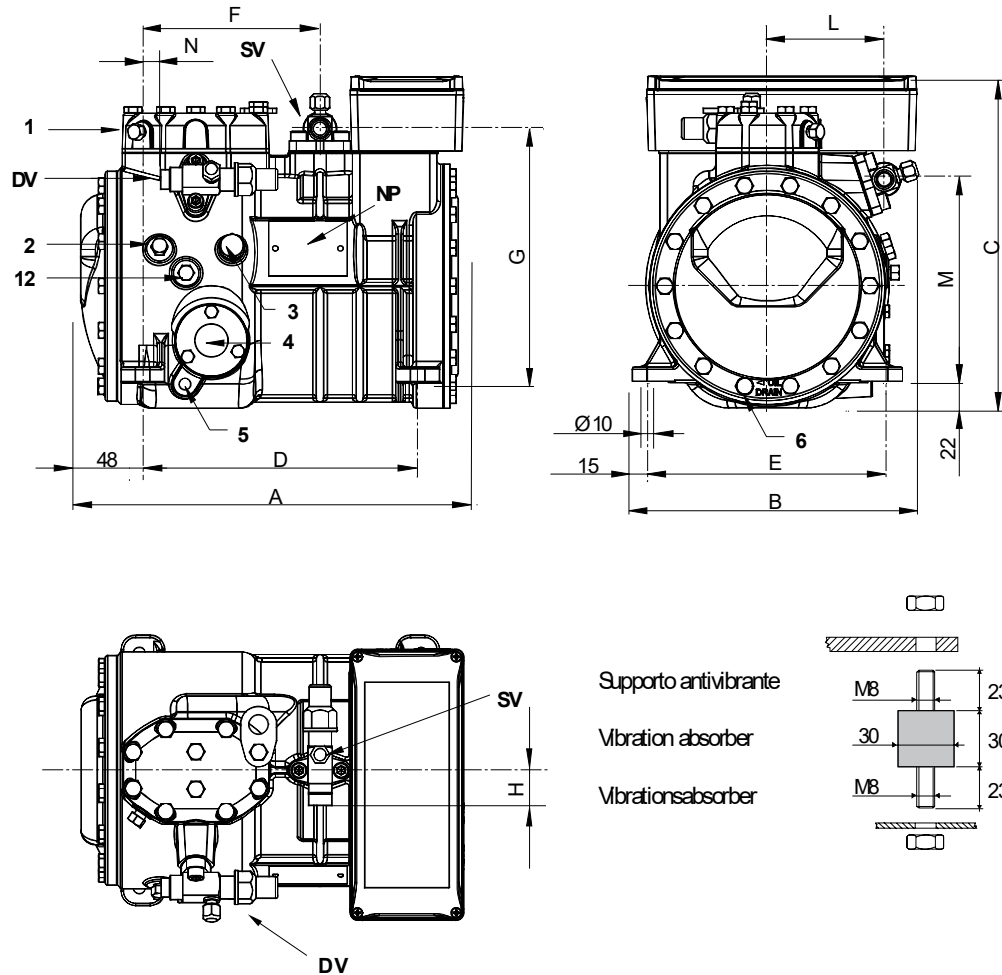
All data subject to change without notice

Model: A1.5-8Y

Refrigerant: R404A

Power supply: 400/3/50 DOL-STAR

Dimensions:



Legend:

SV: Suction Valve	5/8" in - 16 mm	M: Discharge valve	167 mm
DV: Discharge valve	1/2" in - 12.7 mm	N: Discharge valve	18 mm
A: Length	317 mm	1: High pressure connection	1/8" NPT
B: Width	237 mm	2: Low pressure connection	1/8" NPT
C: Height	275 mm	3: Oil charge plug	1/4" GAS
D: Base mounting	234 mm	4: Oil level sight glass	-
E: Base mounting	194 mm	5: Crankcase heater seat	-
F: Suction Valve	150 mm	6: Oil drain plug	M8 x 22
G: Suction Valve	209 mm	12: Oil return plug	1/8" NPT
H: Suction Valve	29 mm	NP: Nameplate	
L: Discharge valve	97 mm		

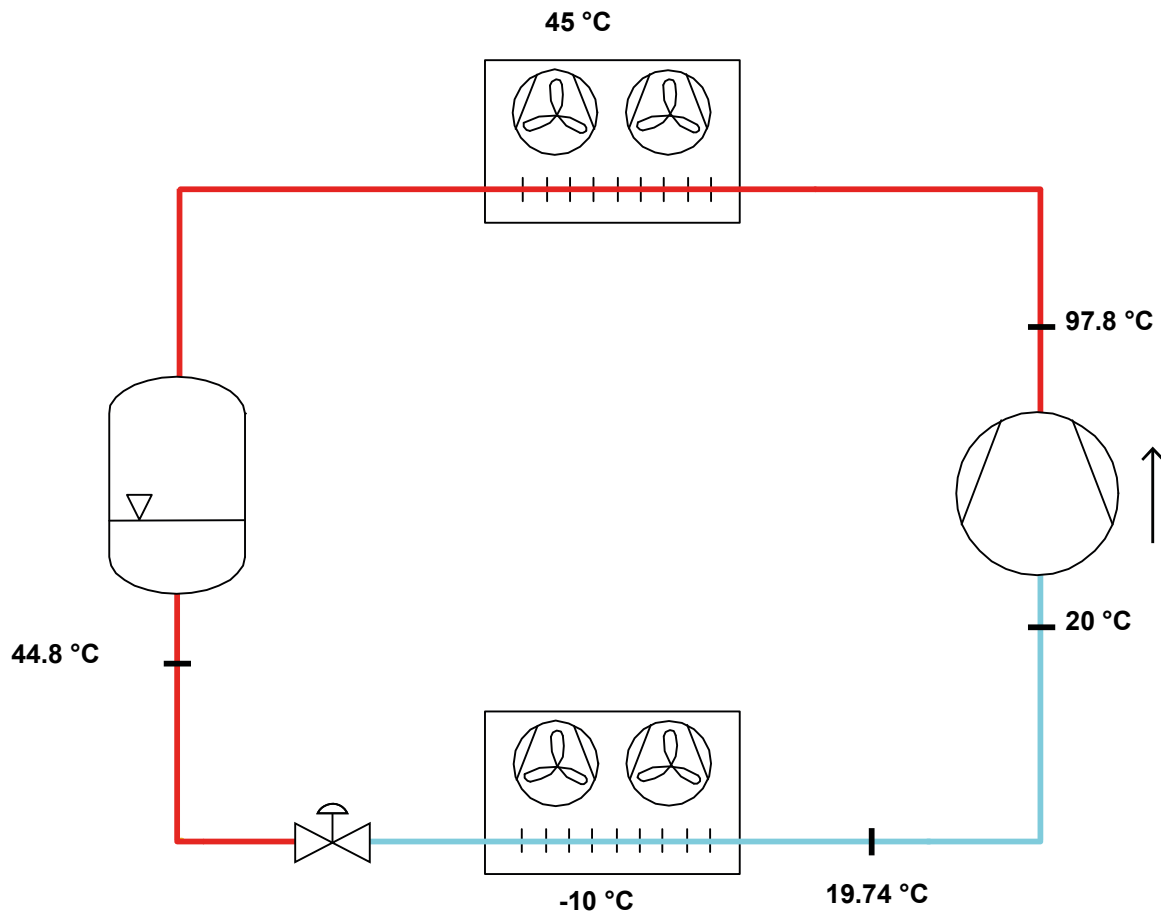
All data subject to change without notice

Model: A1.5-8Y

Refrigerant: R404A

Power supply: 400/3/50 DOL-STAR

P&I Diagram:



Model: A1.5-8Y

Refrigerant: R404A

Power supply: 400/3/50 DOL-STAR

Performance data:

Operating mode	Subcritical, 100 % of the capacity
Liquid subcooling	0 K
Suction gas temperature	20 °C
Useful fraction of superheating	100 %
Frequency	50 Hz
Additional cooling required	

Refrigerating capacity [kW]

T.Evap	-40 °C	-35 °C	-30 °C	-25 °C	-20 °C	-15 °C	-10 °C	-5 °C	0 °C	5 °C
T.Cond										
55 °C	-	-	1.012	1.363	1.779	2.277	2.871	3.582	4.421	5.406
50 °C	0.55	0.843	1.176	1.565	2.027	2.578	3.234	4.013	4.929	5.997
45 °C	0.667	0.984	1.348	1.776	2.285	2.89	3.608	4.456	5.448	6.601
40 °C	0.791	1.132	1.528	1.995	2.551	3.211	3.99	4.908	5.978	7.215
35 °C	0.919	1.285	1.714	2.221	2.823	3.539	4.38	5.369	6.516	7.838
30 °C	1.051	1.441	1.903	2.45	3.101	3.872	4.776	5.835	7.06	8.468
25 °C	1.183	1.6	2.095	2.682	3.381	4.208	5.176	6.305	7.609	9.102
20 °C	1.316	1.758	2.286	2.915	3.663	4.546	5.577	6.779	8.161	9.741

Power input [W]

T.Evap	-40 °C	-35 °C	-30 °C	-25 °C	-20 °C	-15 °C	-10 °C	-5 °C	0 °C	5 °C
T.Cond										
55 °C	-	-	1159	1357	1558	1758	1952	2138	2312	2469
50 °C	780	958	1142	1330	1518	1703	1879	2045	2196	2328
45 °C	785	956	1131	1307	1481	1649	1807	1951	2078	2184
40 °C	794	957	1122	1285	1444	1594	1731	1853	1955	2033
35 °C	804	957	1111	1260	1402	1533	1649	1747	1823	1873
30 °C	811	954	1094	1229	1353	1464	1558	1631	1679	1700
25 °C	812	943	1070	1188	1294	1384	1454	1501	1521	1511
20 °C	803	922	1034	1134	1220	1288	1333	1353	1344	1302

COP/EER [W/W]

T.Evap	-40 °C	-35 °C	-30 °C	-25 °C	-20 °C	-15 °C	-10 °C	-5 °C	0 °C	5 °C
T.Cond										
55 °C	-	-	0.87	1	1.14	1.3	1.47	1.67	1.91	2.19
50 °C	0.7	0.88	1.03	1.18	1.33	1.51	1.72	1.96	2.24	2.58
45 °C	0.85	1.03	1.19	1.36	1.54	1.75	2	2.28	2.62	3.02
40 °C	1	1.18	1.36	1.55	1.77	2.02	2.31	2.65	3.06	3.55
35 °C	1.14	1.34	1.54	1.76	2.01	2.31	2.66	3.07	3.57	4.18
30 °C	1.3	1.51	1.74	1.99	2.29	2.64	3.07	3.58	4.2	4.98
25 °C	1.46	1.7	1.96	2.26	2.61	3.04	3.56	4.2	5	6.03
20 °C	1.64	1.91	2.21	2.57	3	3.53	4.18	5.01	6.07	7.48

Current [A]

T.Evap	-40 °C	-35 °C	-30 °C	-25 °C	-20 °C	-15 °C	-10 °C	-5 °C	0 °C	5 °C
T.Cond										
55 °C	-	-	3.04	3.21	3.42	3.64	3.88	4.1	4.31	4.5
50 °C	2.81	2.9	3.02	3.19	3.37	3.58	3.79	3.99	4.17	4.33
45 °C	2.81	2.9	3.02	3.16	3.34	3.52	3.7	3.87	4.03	4.16
40 °C	2.82	2.9	3.01	3.14	3.3	3.46	3.61	3.76	3.88	3.97
35 °C	2.82	2.9	3	3.12	3.25	3.39	3.52	3.63	3.72	3.78
30 °C	2.82	2.9	2.99	3.09	3.21	3.32	3.42	3.5	3.55	3.58
25 °C	2.82	2.89	2.97	3.06	3.15	3.24	3.31	3.36	3.38	3.37
20 °C	2.82	2.88	2.95	3.02	3.09	3.15	3.19	3.21	3.2	3.16

All data subject to change without notice

Model: A1.5-8Y

Refrigerant: R404A

Power supply: 400/3/50 DOL-STAR

Performance data:

Operating mode	Subcritical, 100 % of the capacity
Liquid subcooling	0 K
Suction gas temperature	20 °C
Useful fraction of superheating	100 %
Frequency	50 Hz
Additional cooling required	

Mass flow [kg/h]	T.Evap	-40 °C	-35 °C	-30 °C	-25 °C	-20 °C	-15 °C	-10 °C	-5 °C	0 °C	5 °C
T.Cond											
55 °C	-	-	35	47	62	80	102	129	162	202	
50 °C	17	26	37	49	64	83	105	132	165	204	
45 °C	19	28	39	52	67	86	108	136	168	207	
40 °C	21	31	42	55	70	89	112	139	172	211	
35 °C	23	33	44	57	73	93	116	143	176	215	
30 °C	25	35	46	60	76	96	119	147	180	219	
25 °C	27	37	48	62	79	99	123	151	184	223	
20 °C	29	39	50	64	81	102	126	154	188	227	