

Model: D3-15.1Y

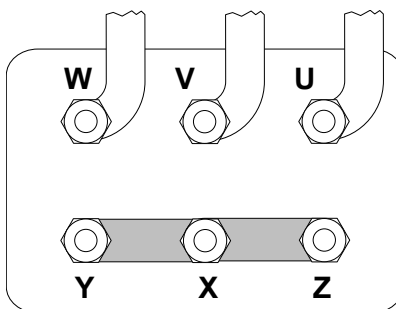
Refrigerant: R404A

Power supply: 400/3/50 DOL-STAR

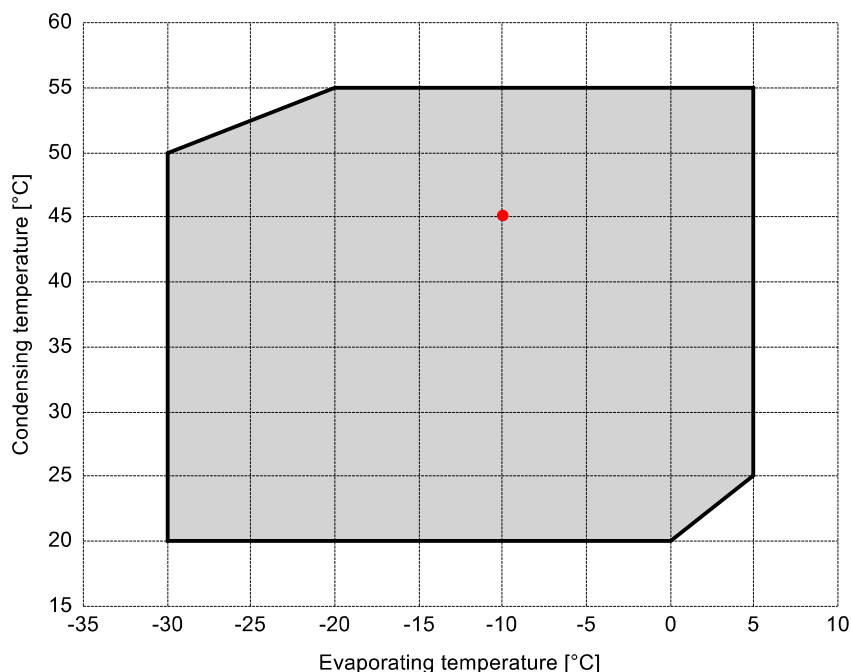
Technical data:

Displacement	15.36 m³/h
Nominal compressor speed	1450 rpm
Motor voltage	400 V
Nominal operating frequency	50 Hz
maximum allowed operating current (MRA)	10.1 A
locked rotor current (LRA)	43.7 A
Number of pistons	2
Net weight	49 kg
Lubricant	FRASCOLD POE32
Oil charge	1.2 l

Motor connections:



Application range:



Reference conditions according to EN12900

- Suction gas temperature = 20 °C
- Liquid subcooling = 0 K
- 100% of the capacity

Certified by:

- ASERCOM (ref. EN12900, 50 Hz, 100% cap.)

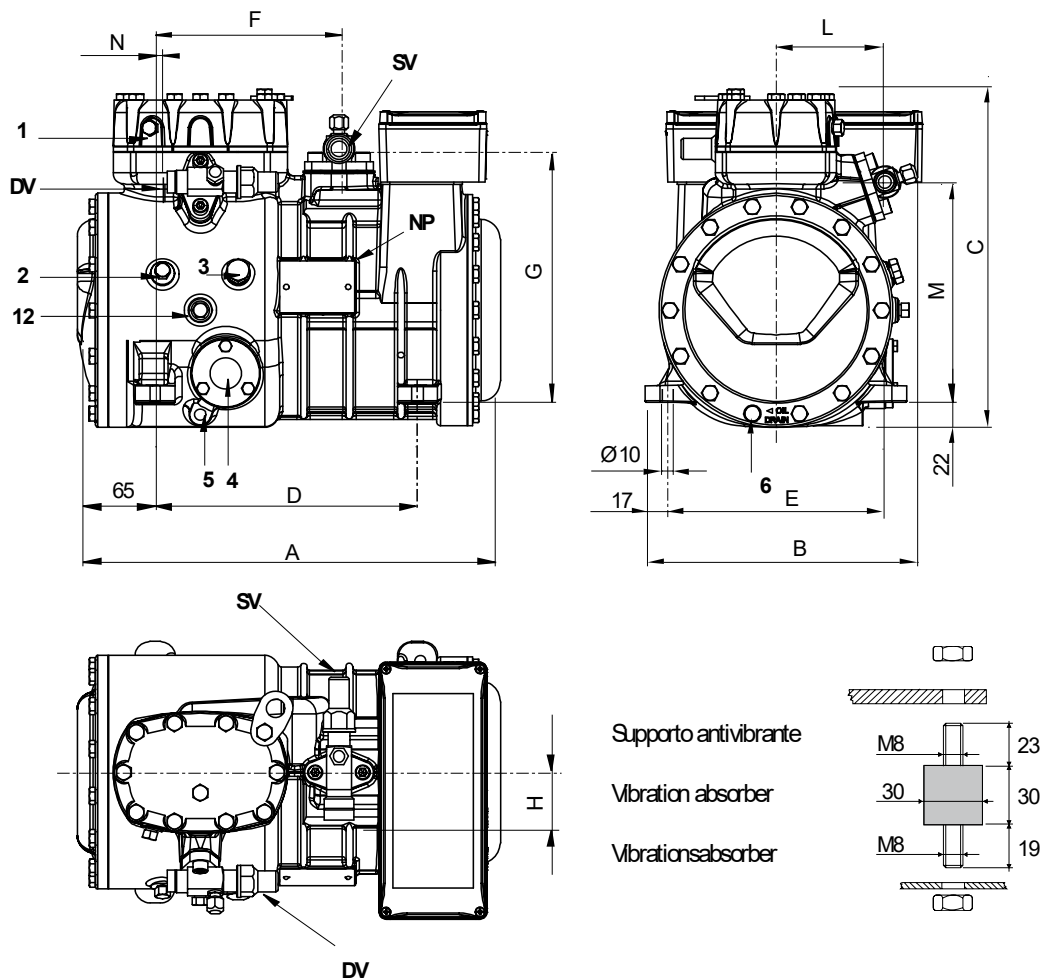
All data subject to change without notice

Model: D3-15.1Y

Refrigerant: R404A

Power supply: 400/3/50 DOL-STAR

Dimensions:



Legend:

SV: Suction Valve	1 1/8" in - 28.575 mm	M: Discharge valve	192 mm
DV: Discharge valve	5/8" in - 16 mm	N: Discharge valve	13 mm
A: Length	374 mm	1: High pressure connection	1/8" NPT
B: Width	242 mm	2: Low pressure connection	1/8" NPT
C: Height	317 mm	3: Oil charge plug	1/4" GAS
D: Base mounting	234 mm	4: Oil level sight glass	-
E: Base mounting	194 mm	5: Crankcase heater seat	-
F: Suction Valve	165 mm	6: Oil drain plug	M8 x 22
G: Suction Valve	225 mm	12: Oil return plug	1/8" NPT
H: Suction Valve	53 mm	NP: Nameplate	
L: Discharge valve	94 mm		

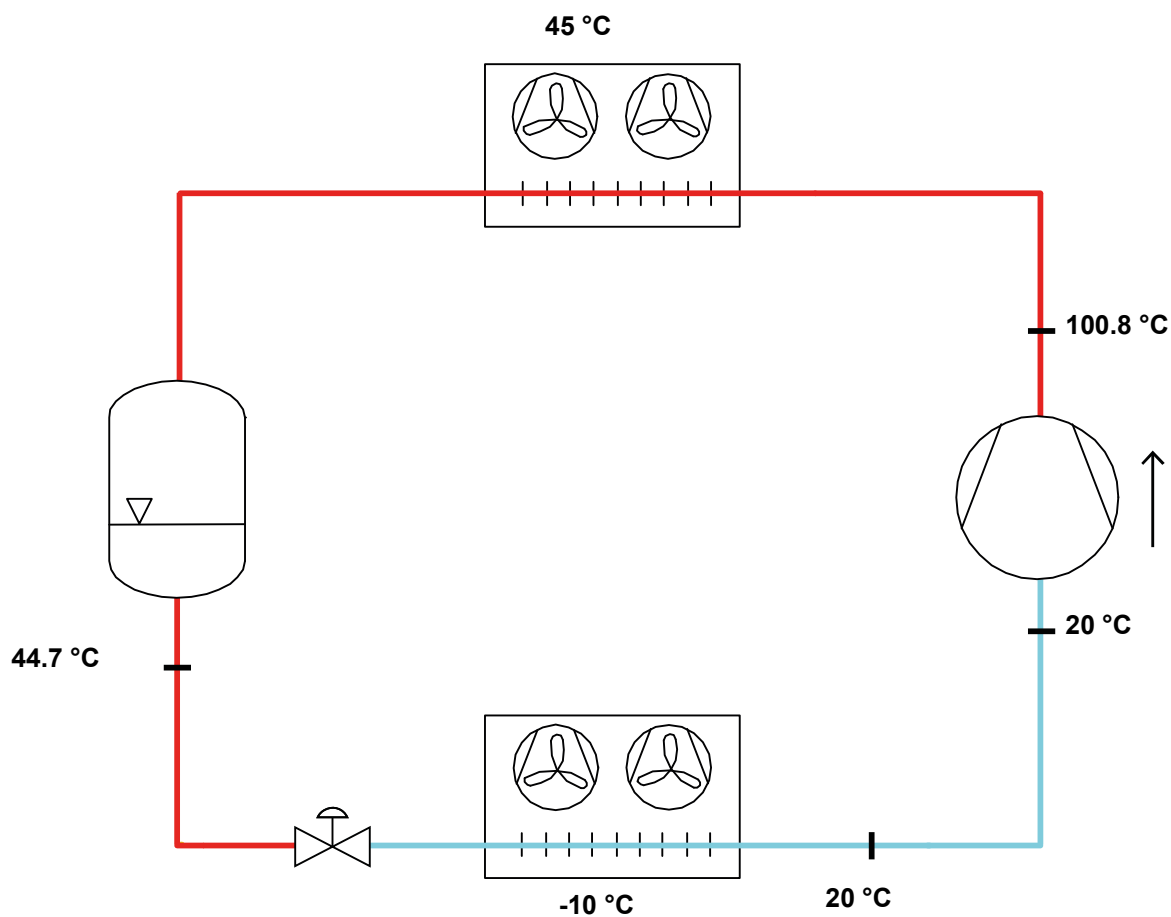
All data subject to change without notice

Model: D3-15.1Y

Refrigerant: R404A

Power supply: 400/3/50 DOL-STAR

P&I Diagram:



Model: D3-15.1Y

Refrigerant: R404A

Power supply: 400/3/50 DOL-STAR

Performance data:

Operating mode	Subcritical, 100 % of the capacity
Liquid subcooling	0 K
Suction gas temperature	20 °C
Useful fraction of superheating	100 %
Frequency	50 Hz
Additional cooling required	

Refrigerating capacity [kW]

T.Evap	-30 °C	-25 °C	-20 °C	-15 °C	-10 °C	-5 °C	0 °C	5 °C
T.Cond								
55 °C	-	-	3.968	4.904	5.998	7.273	8.752	10.46
50 °C	2.798	3.576	4.486	5.551	6.795	8.24	9.911	11.831
45 °C	3.124	3.988	5.004	6.195	7.585	9.198	11.058	13.186
40 °C	3.454	4.4	5.519	6.834	8.369	10.147	12.191	14.526
35 °C	3.788	4.814	6.033	7.468	9.144	11.084	13.311	15.849
30 °C	4.124	5.227	6.543	8.096	9.911	12.01	14.417	17.155
25 °C	4.462	5.638	7.049	8.717	10.668	12.923	15.506	18.442
20 °C	4.801	6.048	7.55	9.331	11.414	13.822	16.58	-

Power input [W]

T.Evap	-30 °C	-25 °C	-20 °C	-15 °C	-10 °C	-5 °C	0 °C	5 °C
T.Cond								
55 °C	-	-	3517	3932	4350	4751	5118	5432
50 °C	2684	3035	3414	3803	4184	4539	4849	5095
45 °C	2609	2950	3308	3667	4007	4310	4558	4732
40 °C	2539	2864	3198	3521	3814	4061	4242	4338
35 °C	2469	2775	3078	3360	3603	3788	3896	3910
30 °C	2396	2677	2945	3181	3368	3486	3518	3445
25 °C	2317	2568	2795	2981	3106	3153	3103	2937
20 °C	2227	2443	2625	2755	2814	2784	2647	-

COP/EER [W/W]

T.Evap	-30 °C	-25 °C	-20 °C	-15 °C	-10 °C	-5 °C	0 °C	5 °C
T.Cond								
55 °C	-	-	1.13	1.25	1.38	1.53	1.71	1.93
50 °C	1.04	1.18	1.31	1.46	1.62	1.82	2.04	2.32
45 °C	1.2	1.35	1.51	1.69	1.89	2.13	2.43	2.79
40 °C	1.36	1.54	1.73	1.94	2.19	2.5	2.87	3.35
35 °C	1.53	1.73	1.96	2.22	2.54	2.93	3.42	4.05
30 °C	1.72	1.95	2.22	2.54	2.94	3.44	4.1	4.98
25 °C	1.93	2.2	2.52	2.92	3.43	4.1	5	6.28
20 °C	2.16	2.48	2.88	3.39	4.06	4.96	6.26	-

Current [A]

T.Evap	-30 °C	-25 °C	-20 °C	-15 °C	-10 °C	-5 °C	0 °C	5 °C
T.Cond								
55 °C	-	-	7.11	7.61	8.14	8.68	9.19	9.63
50 °C	6.22	6.57	6.99	7.45	7.93	8.4	8.81	9.15
45 °C	6.15	6.48	6.87	7.29	7.7	8.09	8.42	8.66
40 °C	6.08	6.4	6.75	7.11	7.46	7.77	8	8.13
35 °C	6.02	6.31	6.62	6.93	7.21	7.43	7.57	7.58
30 °C	5.96	6.21	6.48	6.73	6.94	7.07	7.11	7.02
25 °C	5.89	6.11	6.33	6.52	6.65	6.7	6.64	6.47
20 °C	5.81	6	6.16	6.29	6.35	6.32	6.18	-

All data subject to change without notice

Model: D3-15.1Y

Refrigerant: R404A

Power supply: 400/3/50 DOL-STAR

Performance data:

Operating mode	Subcritical, 100 % of the capacity
Liquid subcooling	0 K
Suction gas temperature	20 °C
Useful fraction of superheating	100 %
Frequency	50 Hz
Additional cooling required	

Mass flow [kg/h]								
T.Evap	-30 °C	-25 °C	-20 °C	-15 °C	-10 °C	-5 °C	0 °C	5 °C
T.Cond								
55 °C	-	-	137	171	212	261	319	390
50 °C	88	113	142	178	220	270	330	401
45 °C	91	117	147	184	227	279	340	413
40 °C	94	120	152	190	234	287	350	423
35 °C	97	124	156	195	241	295	358	433
30 °C	100	127	160	200	247	302	366	442
25 °C	103	130	164	204	252	308	374	450
20 °C	105	133	168	208	257	314	380	-